

FUNCTIONAL FOOD CONCENTRATES SUPREME SERIES

功能性濃縮食品至尊系列

超級靈芝皇

竹林邊，松樹下，
浴木重生之靈芝，
接地氣、沐陽光、承雨露、
集天地靈氣，納日月精華，
成草木菁英，孕育出安永

NEW
新產品

SUPALINGZHI®



中國靈芝研究之父林志彬教授題字

PRODUCTS YOU TRUST 信譽產品



NEXT TO THE BAMBOO, UNDER THE TREE, NU LIFE HAS THE BEST LINGZHI



林志彬教授
Prof. LIN Zhi-Bin

- 北京大學醫學部基礎醫學院藥理學系教授
Professor of Peking University School of Basic Medical School
Department of Pharmacology
- 中國藥理學會名譽理事長
Chairman of Chinese Pharmacological Society Honorary
- 國際靈芝研究學會主席
Chairman of International Society on Ganoderma Research (ISGR)
- 中國食用菌協會顧問
Consultant of China Edible Fungi Association





中華靈芝，護佑眾生

“CHINESE LINGZHI, PROTECT YOU & ME”

多年前，我們曾經對此產品做過一些研究，發現它通過抗脂質過氧化反應，對D-氨基半乳糖誘發的小鼠肝損傷有明顯的保護作用（李敏等·亞太傳統醫藥，2009，5(8):15-18）。

「超級靈芝皇」是以靈芝子實體提取物為主要成分的複方靈芝製劑，與單一靈芝成分（靈芝子實體提取物或靈芝孢子粉）的產品相比，它與丹蔘、大黃等中藥配伍，相輔相成，將靈芝的功效發揮到更大，因此，是值得推廣的優質健康產品。

在「超級靈芝皇」於香港上市銷售之際，我衷心希望此產品將會豐富香港的靈芝產品市場，為《健康中國2030規劃》的實施，治未病也治已病，發揮靈芝這一「上藥」的功效，實現「中華靈芝，護佑眾生」的夢想。

After reading this leaflet on Lingzhi and SUPALINGZHI, it reminds me of something in the past. Many years ago, we conducted some researches on this product and discovered that through lipid peroxidation, it has a protective effect on mice with liver damage induced by D-Galactosamine.

SUPALINGZHI is a Lingzhi compound formulation using Lingzhi sporocarp extract as the main ingredient. Comparing with single ingredient Lingzhi product (Lingzhi sporocarp extract or Lingzhi spore powder), adding Chinese medicine like Danshen and Rhubarb, could complement each other and maximize the effect of Lingzhi. Therefore, it is an excellent healthcare product to be promoted.

As SUPALINGZHI is available for purchase in Hong Kong, I truly wish that this product would enrich the Lingzhi products' market, for the "Healthy China 2030 blueprint" implementation, to heal those who are well and those who are unwell, to bring out the efficacy of this top Chinese Medicine ingredient, Lingzhi, and to fulfill the wish of "Chinese Lingzhi, Protect You & Me".

*此產品沒有根據《藥劑業及毒藥條例》或《中醫藥條例》註冊。為此產品作出的任何聲稱亦沒有為進行該等註冊而接受評核。此產品並不供作診斷、治療或預防任何疾病之用。

*This product is not registered under the Pharmacy and Poisons Ordinance or the Chinese Medicine Ordinance. Any claim made for it has not been subject to evaluation for such registration. This product is not intended to diagnose, treat or prevent any disease.

NEW
新產品

超級靈芝皇

超級靈芝皇的主要成份及功效

MAIN INGREDIENTS



靈芝

Lingzhi



熟大黃

Rhubarb



丹蔘

Danshen

甚麼是超級靈芝皇？

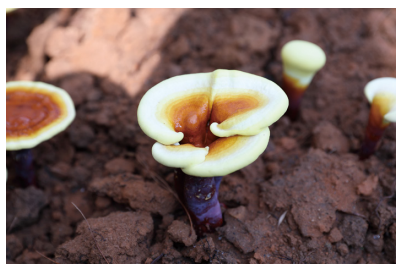
WHAT IS SUPALINGZHI?

SUPALINGZHI is probably the best Functional Food Concentrates, with a relatively higher concentration of Lingzhi extract within the market. The formula is Lingzhi based, with other constituents added for synergistic and potentiating effect. It is capable of fully protecting body cells, as well as raising overall immunity.

Our unique extraction method prevents active ingredients from being destroyed, resulting in its purity close to 100%. A complex formula (danshen, arginine, rhubarb and taurine) enhanced the effect of health protection by its synergistic effect. Our SUPALINGZHI not only helps to protect DNA, but also is capable of alleviating the side-effects from chemotherapy, radiation therapy and surgery (vomiting, insomnia, headache, loss of appetite etc.), protecting the liver, enhancing metabolism, promoting regeneration of liver cells, regulating immunity, repairing body cells, and may assists in inhibiting tumor activities, detoxification and lowering the risk of carcinogenesis.

超級靈芝皇可能是市面上靈芝提取物含量最高、最優質的養生功能性濃縮食品（FFC）。配方以靈芝為主，輔以有協同及加強作用的材料作複方，可有效全面地保護細胞，提高細胞綜合免疫功能。

利用獨特的萃取技術令有效物質不易被破壞，提取物的純度更充分，可接近 100%。產品的複方性（丹蔘、精氨酸、熟大黃、牛磺酸）可加強產品的協同作用，令保健效果相輔相成；除了能保護人體最重要的 DNA、或有助舒緩化學治療、放射線治療或手術期間所引起的副作用（如：嘔吐、失眠、頭痛、食慾不振等）、保護肝臟、增強代謝功能、促進肝細胞再生；同時亦有助調節免疫力、修復細胞和清除體內毒素，或可有助減低癌變風險的功能。



超級靈芝皇的 7 大好處

MAIN BENEFITS OF SUPALINGZHI



1

有助防止細胞斷裂，
避免 DNA 損傷

Prevents cell breakage and DNA damage

3

或有助於穩定血脂、
血糖、膽固醇

May assist in stabilizing blood lipids, blood sugar and cholesterol

5

有助改善睡眠質量

Helps improve sleeping quality

7

有助保護肝臟及肝細胞

Helps protect liver and liver cells

2

或有助減低接受化學治療、
放射線治療期間或接受手術
前後所產生的副作用

May assist in alleviating side effects during or after chemotherapy, radiation therapy, or surgery



4

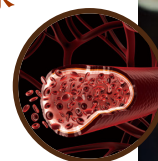
有助提升免疫力

Helps enhance immune system

6

有助促進心血管健康

Helps facilitate cardiovascular health



* 此產品沒有根據《藥劑業及毒藥條例》或《中醫藥條例》註冊。為此產品作出的任何聲稱亦沒有為進行該等註冊而接受評核。此產品並不供作診斷、治療或預防任何疾病之用。

*This product is not registered under the Pharmacy and Poisons Ordinance or the Chinese Medicine Ordinance. Any claim made for it has not been subject to evaluation for such registration. This product is not intended to diagnose, treat or prevent any disease.



超級靈芝白王

參觀靈芝種植基地 VISITING LINGZHI PLANTING BASE



Mrs. Khan visited a Lingzhi planting base in China (Fuzhou) to better understand the methods and environment of Lingzhi planting. There are 50 acres of land for Lingzhi in the mountain with spring water from the national ecological conservation zone, ensuring Lingzhi grows healthily.

簡 太為了更清楚了解靈芝的種植方法和種植靈芝的環境，親赴中國靈芝種植基地實地福州考察。當地足足種植了 50 畝的靈芝，吸收山中靈氣，並以國家保護生態嶺裡面的山泉水灌溉，令靈芝更健康。



林教授親筆題字「超級靈芝皇」 INSCRIPTION FROM PROF. LIN – SUPALINGZHI



Besides writing the preface for SUPALINGZHI, Prof. Lin Zhi-Bin also inscribed words for our product.

林 志彬教授除了為超級靈芝皇賜序外，更為我們的產品「超級靈芝皇」題字。



林志彬教授專訪 EXCLUSIVE INTERVIEW WITH PROF. LIN



In order to better understand Lingzhi, Mrs. Khan and Mr. Lau Fuk-wah visited Hangzhou and interviewed Prof. Lin, renowned as “Father of Lingzhi” and the best-known expert at Chinese Lingzhi. This trip was very successful and inspiring.



為 了讓各位更了解甚麼是靈芝，簡太和劉福華先生特地遠赴中國杭州，訪問了中國靈芝研究第一人，被譽為中國靈芝之父－林志彬教授，此行確實獲益良多。